

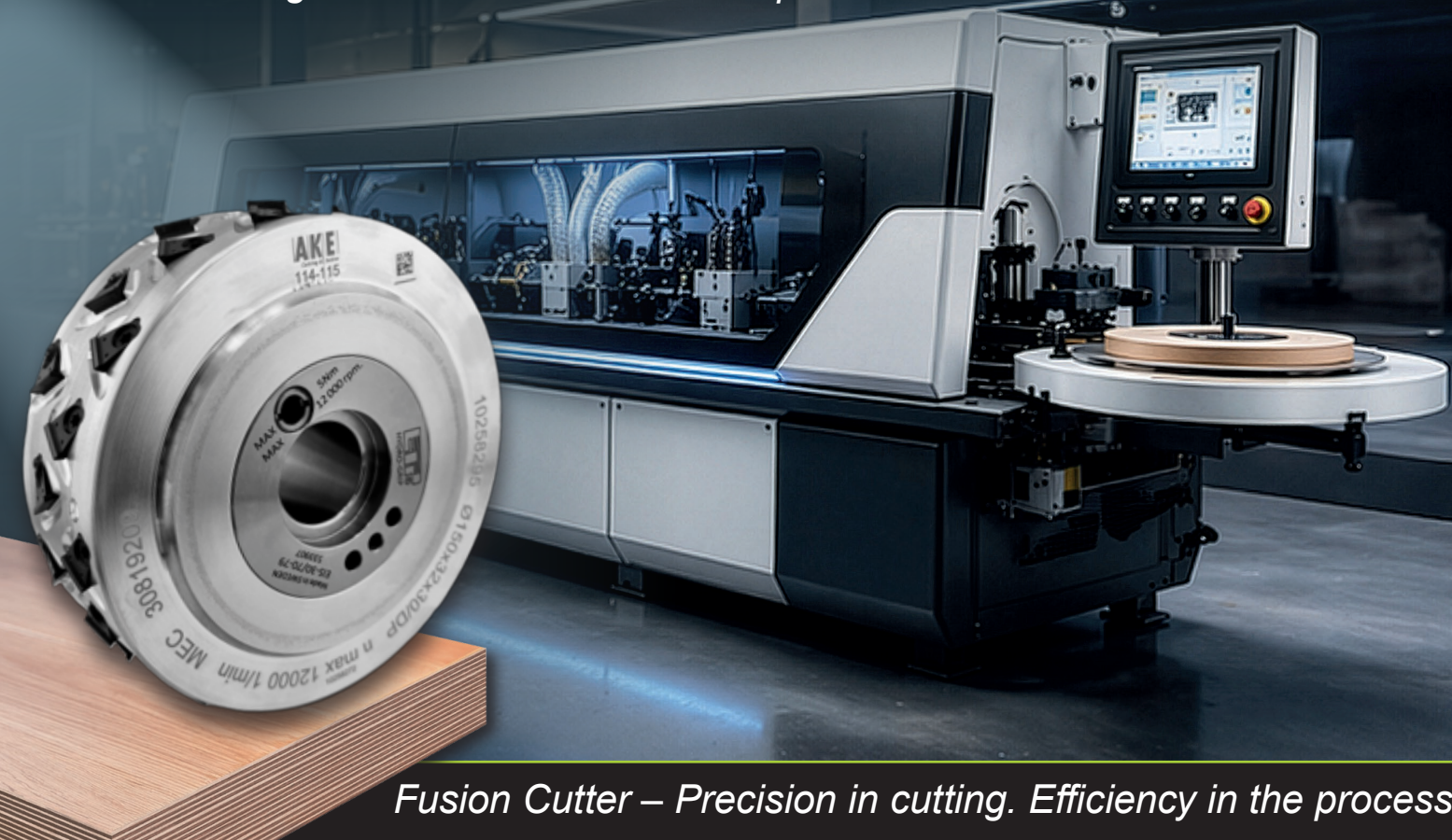
Jointing cutter with interchangeable knives

# DP Fusion Cutter

For edge bander and double-end profilers

# AKE

Cutting & better



Fusion Cutter – Precision in cutting. Efficiency in the process

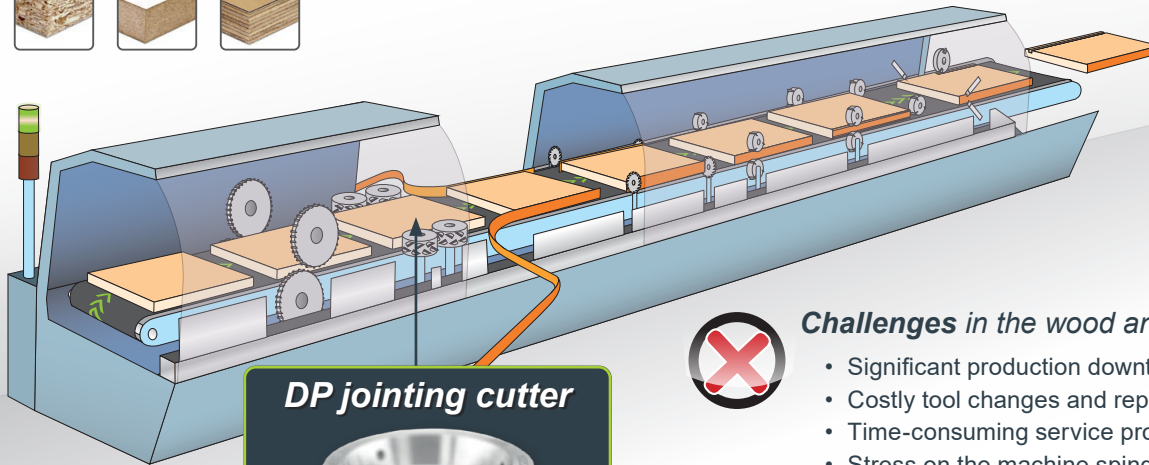
## *AKE presents: DP jointing cutter Fusion Cutter*



*The **Fusion Cutter** is an efficient, diamond-tipped jointing cutter for processing wood-based panels, both coated and uncoated.*

*It has been specially developed to meet the requirements of the furniture and woodworking industries – where the **highest quality, process reliability** and **cost-effectiveness** are crucial. Equipped with **diamond replaceable knives**, it combines **precision with flexibility**.*

## Challenge and solution



### DP jointing cutter



For sizing an jointing of  
wood-based panels



### Challenges in the wood and furniture industry

- Significant production downtime
- Costly tool changes and replacements
- Time-consuming service processes
- Stress on the machine spindle when using heavy tools
- Inflexible tooling systems in continuous operation



### The solution: DP jointing cutter Fusion Cutter

- The tool remains in the machine
- Only the knives are changed
- On-site servicing is possible
- Fast reaction times during operation

## Benefits at a glance



### *Maximum cost-effectiveness*

- No need to replace the entire tool
- Significantly reduced service and procurement costs



### *Minimised downtime*

- Knives change directly on the machine
- No disassembly required



### *Can be resharpened multiple times*

- Diamond replaceable knives can be re-eroded twice
- Up to 3 service lives per knife



### *Spindle-friendly design*

- The aluminium base body reduces the load on the machine spindle



### *Flexible operational use*

- Fast tool servicing directly on site
- Planned maintenance





## Standard range

- $\varnothing$  60 – 220 mm



## Possible versions

- Mounting height: 3 mm
- Cutting width: 8 – 300 mm
- Base body: steel or aluminium
- Available knife options:
  - **Industrie-Line** - extremely durable, for highest demands
  - **Standard** - ideal for everyday use

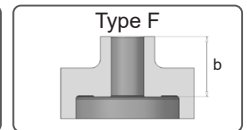
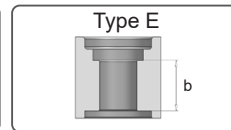
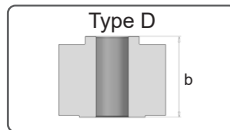
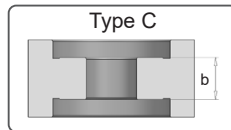
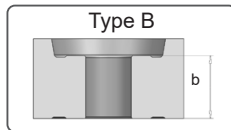
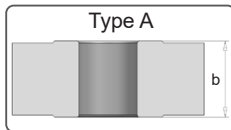


## Interfaces

- Bore diameter 20–80 mm (with / without DKN)
- Hydraulic clamping: 30/40 mm
- HSK 32 R (steel body only)
- HSK 63 F



- | Edge banding machines
- | Double-end profilers
- | CNC machining centres



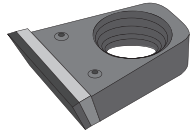
## AKE joining cutters – Advantages in a System Comparison

	Universal use	High cutting quality	Service life	Set-up times Flexibility	Costs
 Fusion Cutter					
 Cutting 2.0					
 Harmony					
 blackline					

## Spare knives

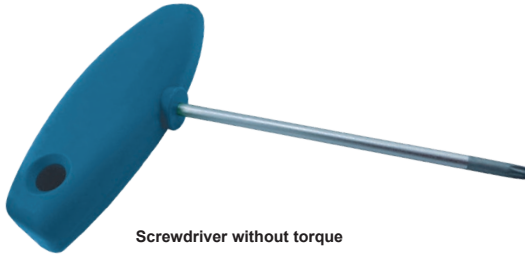


Screw M5 x 12,5 T20



Spare knife

## Screwdriver



Screwdriver without torque



Torque screwdriver with bit  
Image for illustration purposes only



Torx T20

