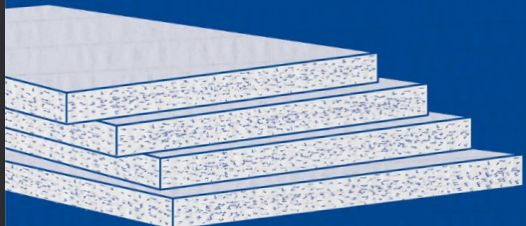





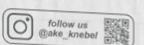



# AKE

Cutting & better

## Tool of the month March / April 2026



[www.ake.de](http://www.ake.de)

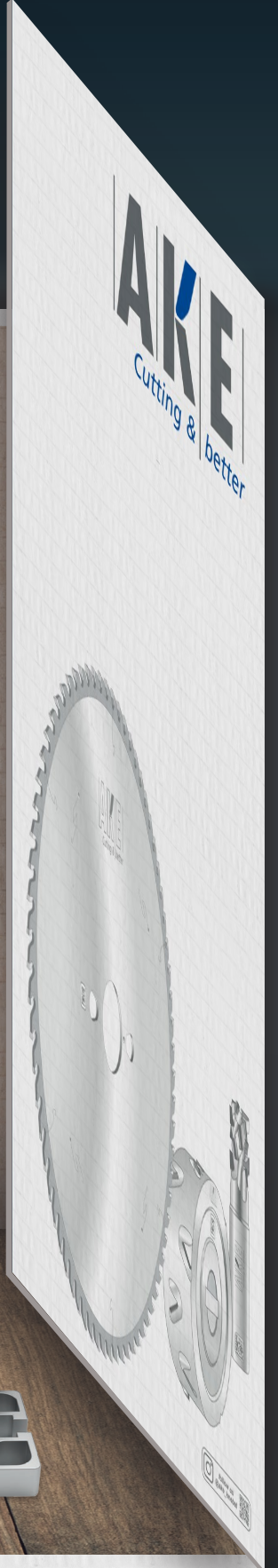


Follow us  
@ake\_anebel

# AKE

Cutting & better

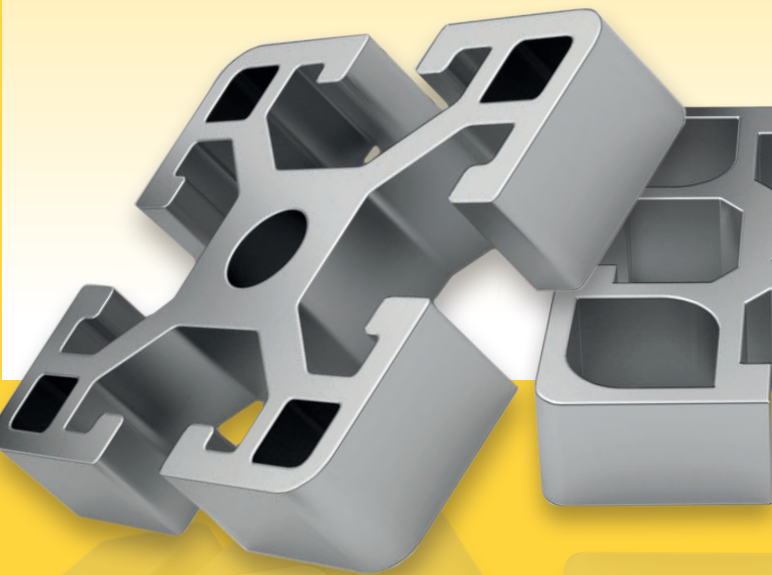
## Tool of the month March / April 2026



# **BOMBASTIC**

*for aluminium*

**Fragile  
aluminium profiles**



**to the tool**

# **PROPLASTIC**

*for plastics*

**Thermoplastics with  
transparent surface**

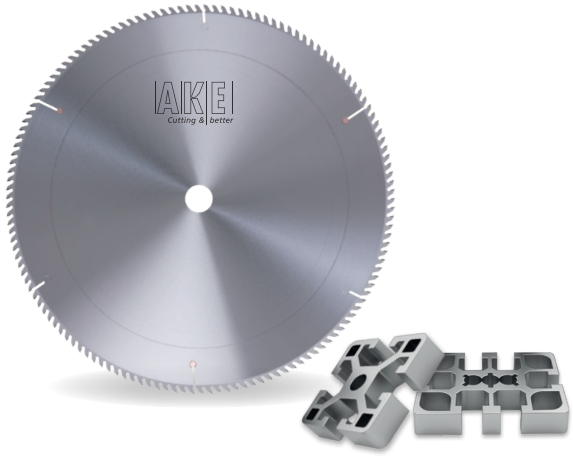


**to the tool**

Contact us now  
+ secure your  
special offer.

## Bombastic [0020DA] - Economical efficiency reinvented

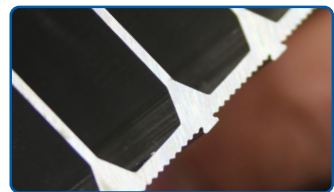
For aluminium processing: Burr-free cuts, extremely economical



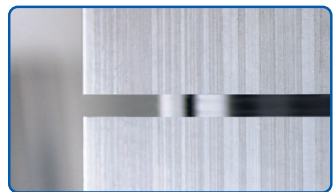
The special saw blade for **excellent, burr-free cuts** eliminates the need for additional edge processing.

**Designed for cutting non-ferrous metals**, this circular saw blade achieves considerable savings thanks to its significantly longer tool life.

Especially when cutting **aluminium profiles**, the typical deburring is no longer necessary.



Filigree aluminium profiles



Excellent, burr-free cuts



**Particularly burr-free edges for the highest demands;  
Low vibration for optimal cuts**



**For use in particularly delicate aluminium profiles;  
Specially developed for cut to size non-ferrous metals**



**Longer tool life compared to conventional circular saw blades**



**Extremely economical = low costs per cut**



Take a look at the  
AKE Catalogue 2025+ on page 95

← Click me



info@ake.de  
+49 7433 261 0

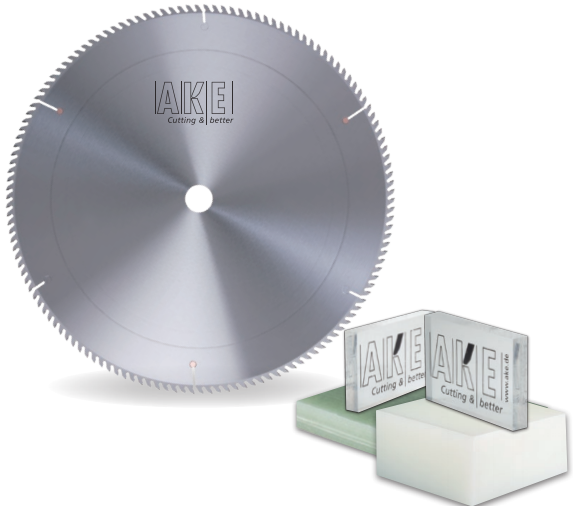
# AKE

Cutting & better

Contact us now  
+ secure your  
special offer.

## Proplastic [0020 A/C] - Economical efficiency reinvented

For plastic processing: Material-friendly, with high-quality cuts



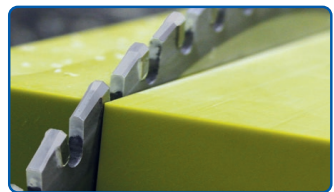
The special saw blade for clean, finish processing  
**Hardly any remachining necessary.**

Designed **especially for thermoplastics** with visible surfaces, this circular saw blade achieves a high-quality cut through material-friendly processing.

**Targeted heat dissipation** via the chips ensures that the workpiece surface remains protected.



Thermoplastics with visible surface



Thermally relieved cut surface



**High-quality cuts to meet the highest standards;  
Material-friendly thanks to targeted heat dissipation**



**For use in sophisticated thermoplastics;  
Specifically designed for thermoplastics with visible surfaces**



**Longer tool life compared to conventional circular saw blades**



**Extremely economical = low costs per cut**



Take a look at the  
AKE Catalogue 2025+ on page 94

← Click me



info@ake.de  
+49 7433 261 0